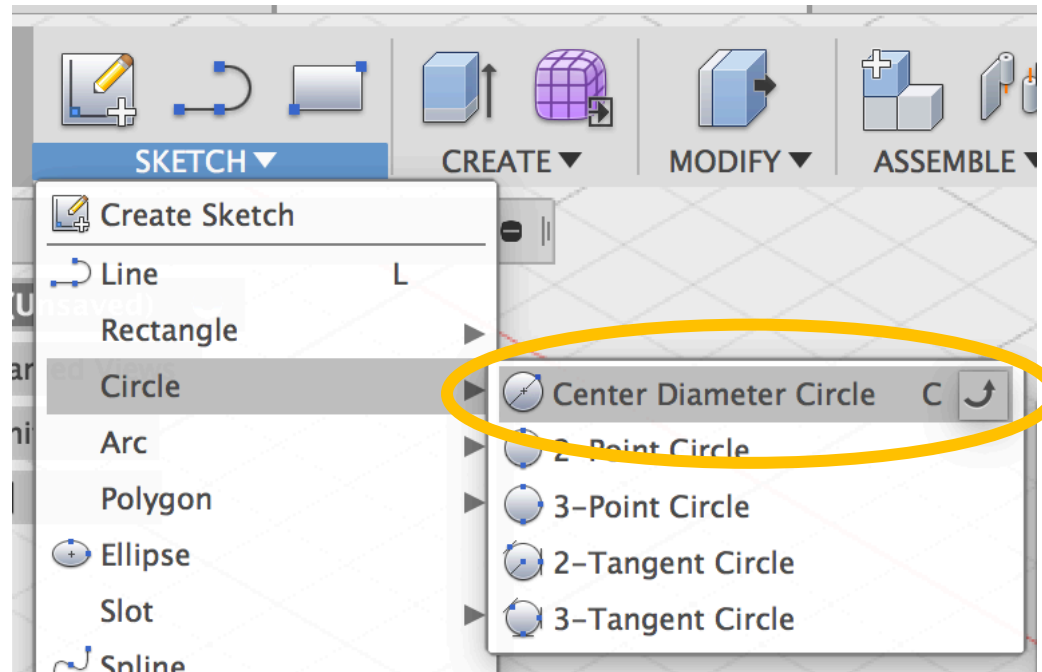


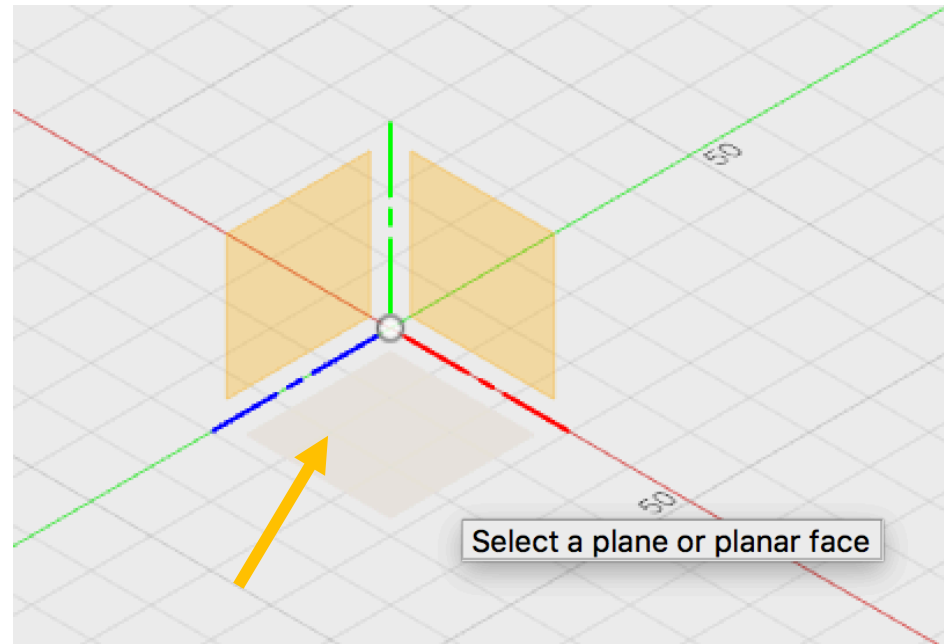
# Lesson 4

Design a ring opener

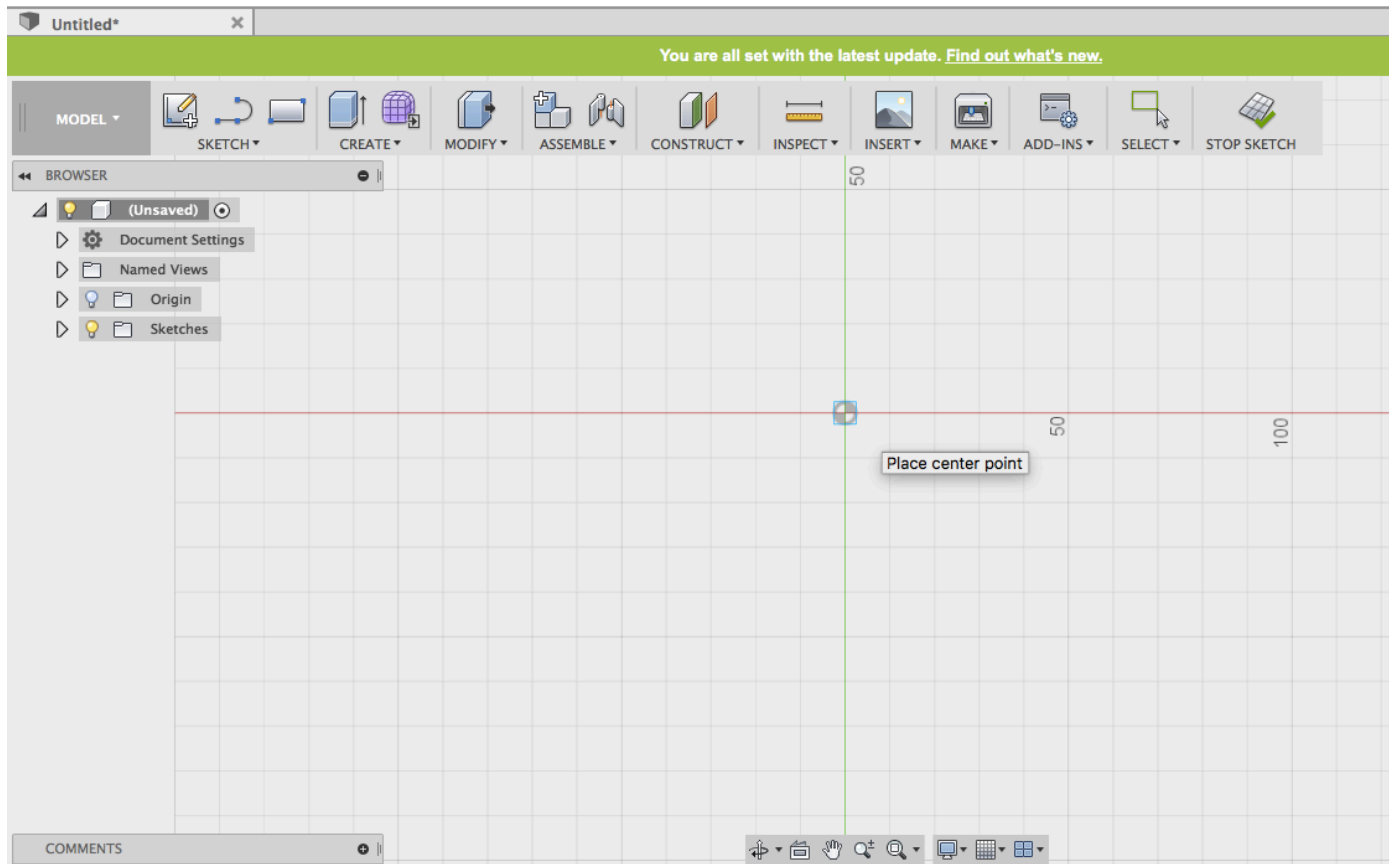
Step 1: Go to “Sketch” > “Circle”> “Center Diameter Circle”.



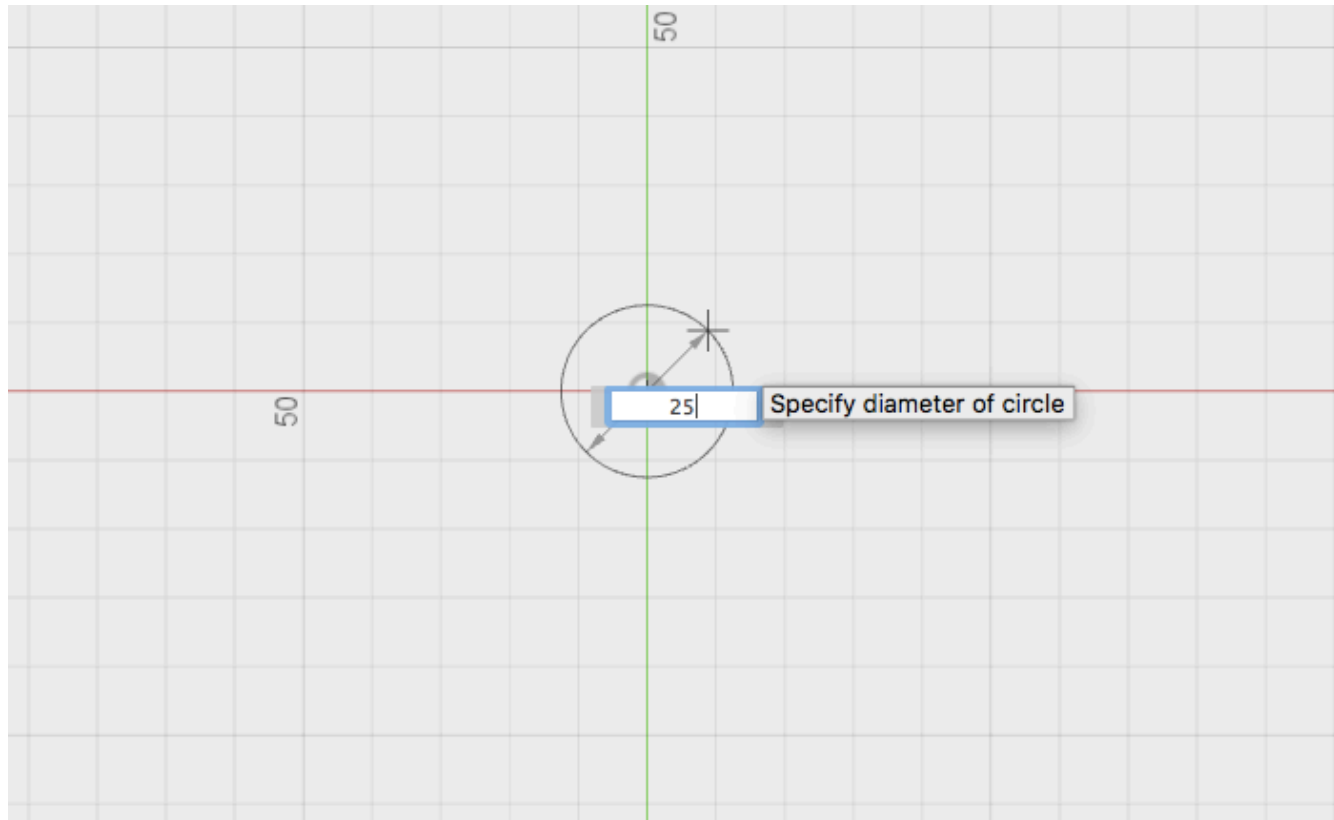
# Step 2: Select the base plane.



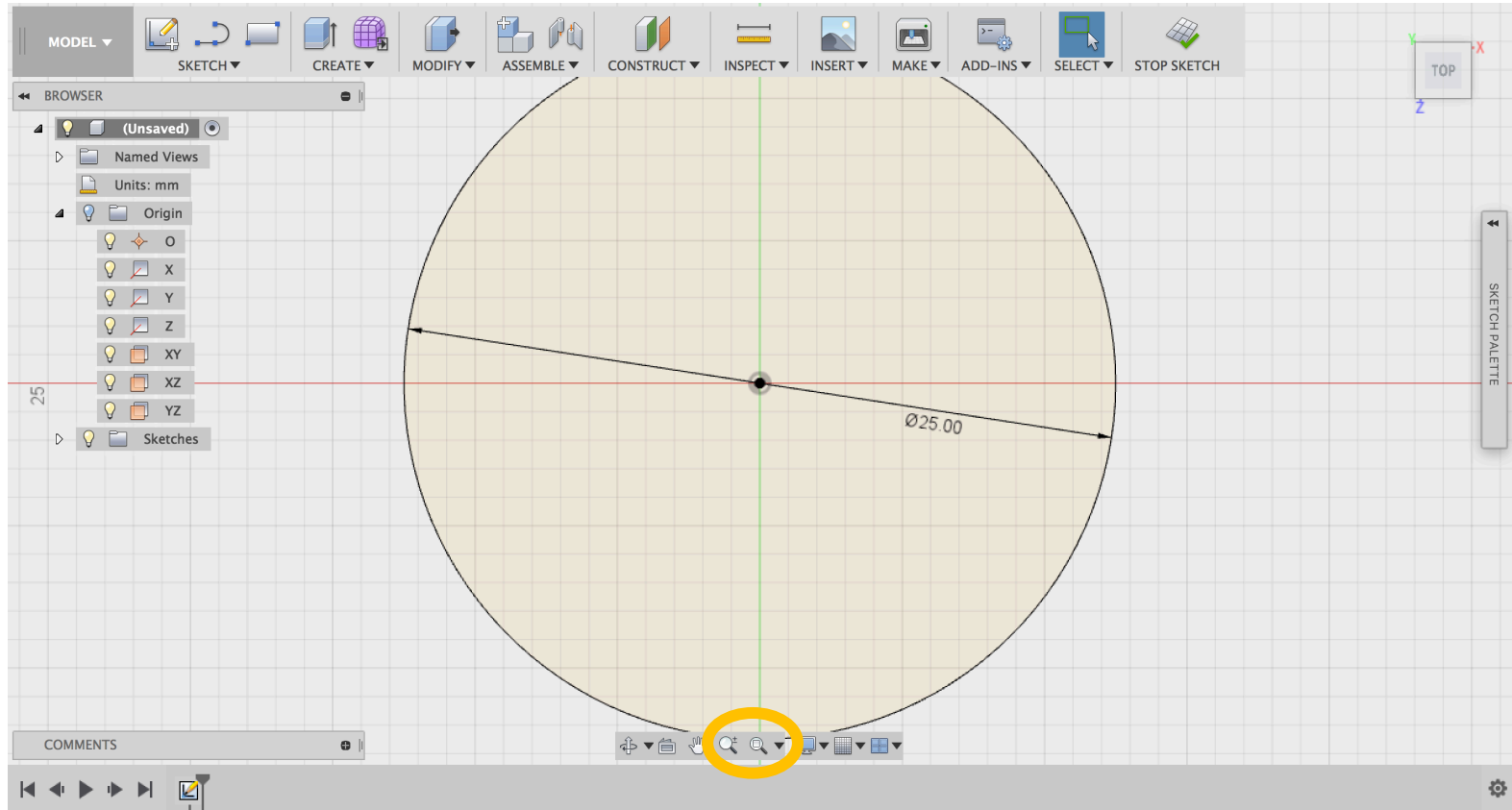
# Step 3: Click on the origin point as the center point



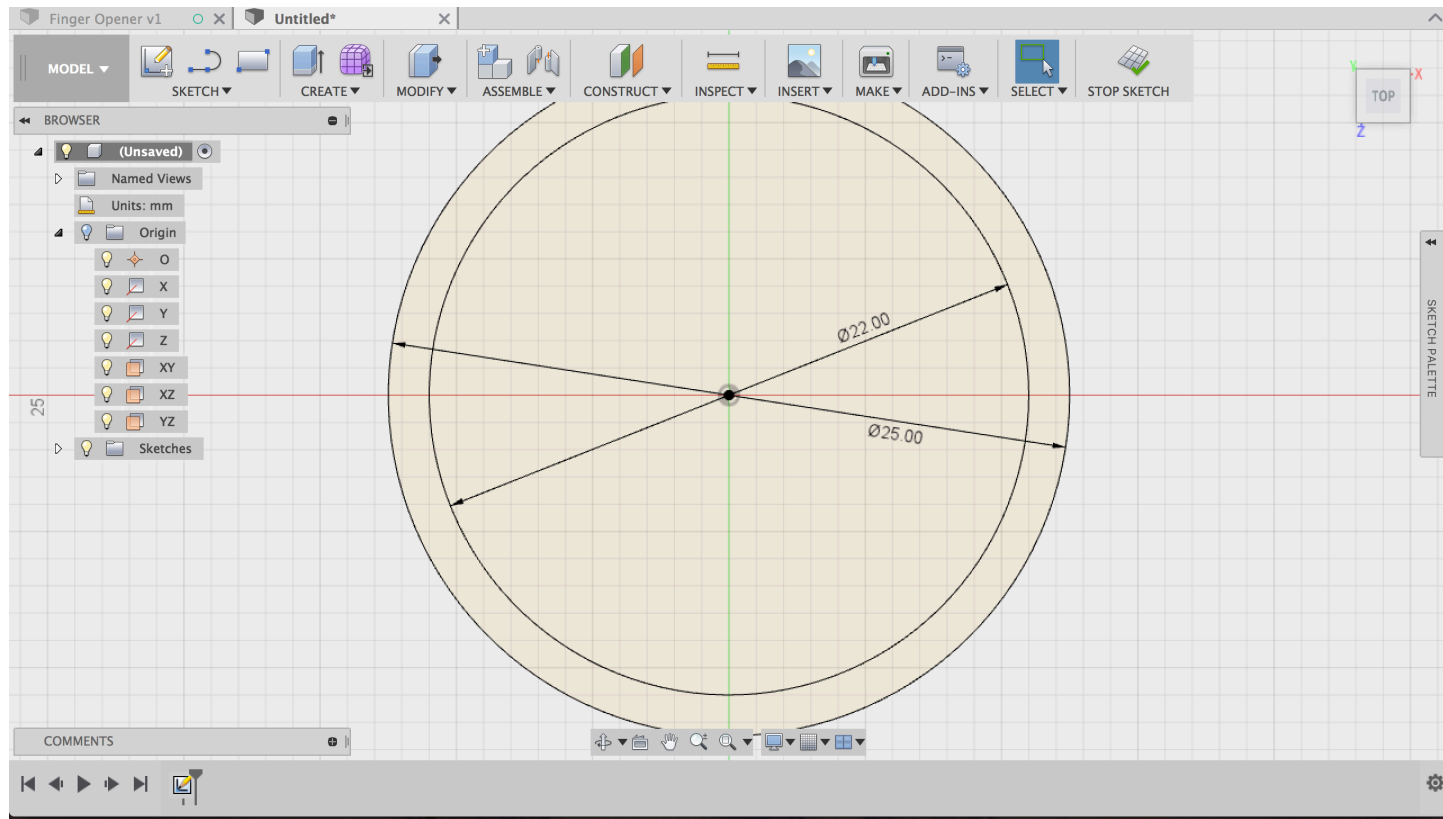
Step 4: Key in “25mm” as the circle diameter then hit “Enter”.



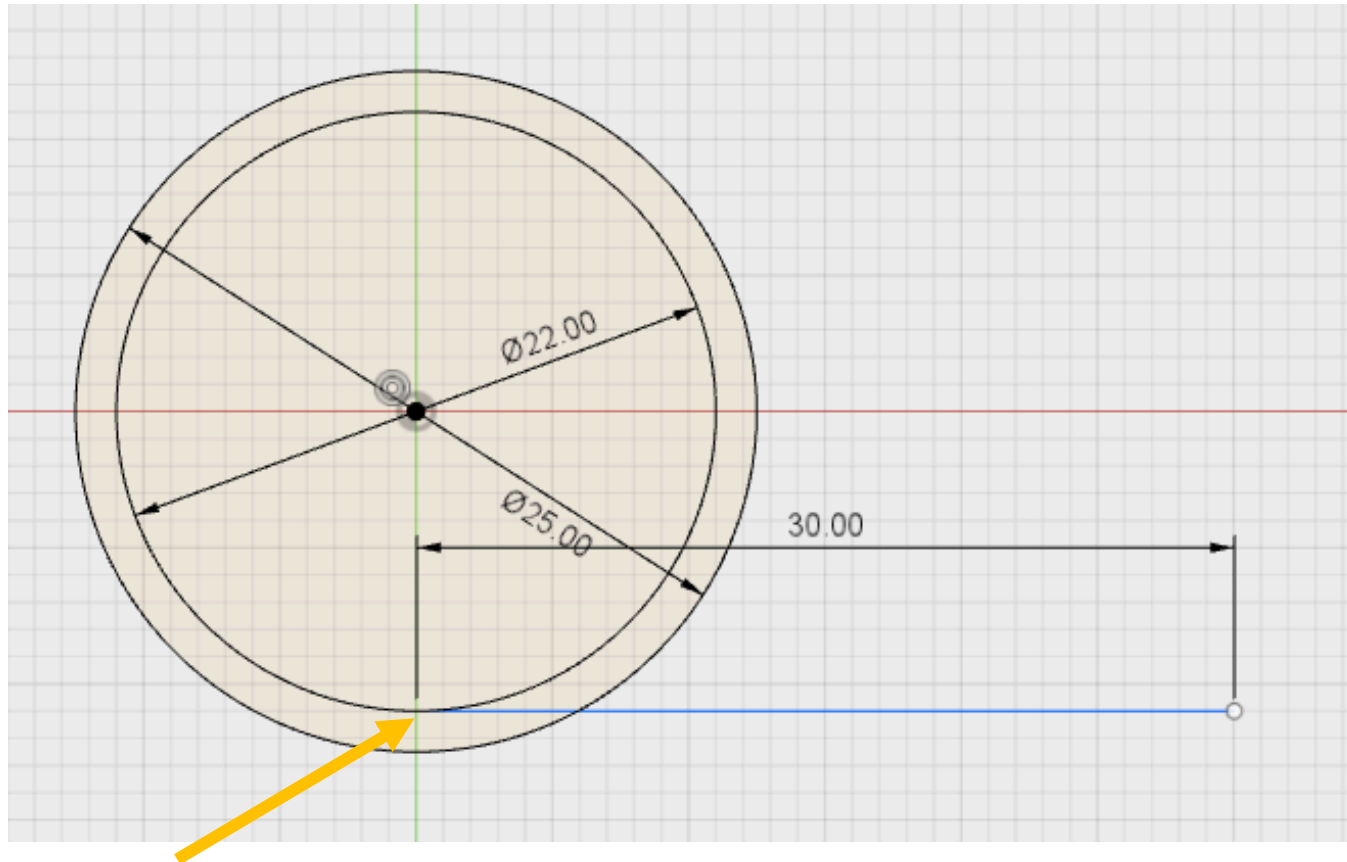
# Step 5: Click to zoom in the circle.



# Step 6: Draw another circle with 22mm diameter from the origin.

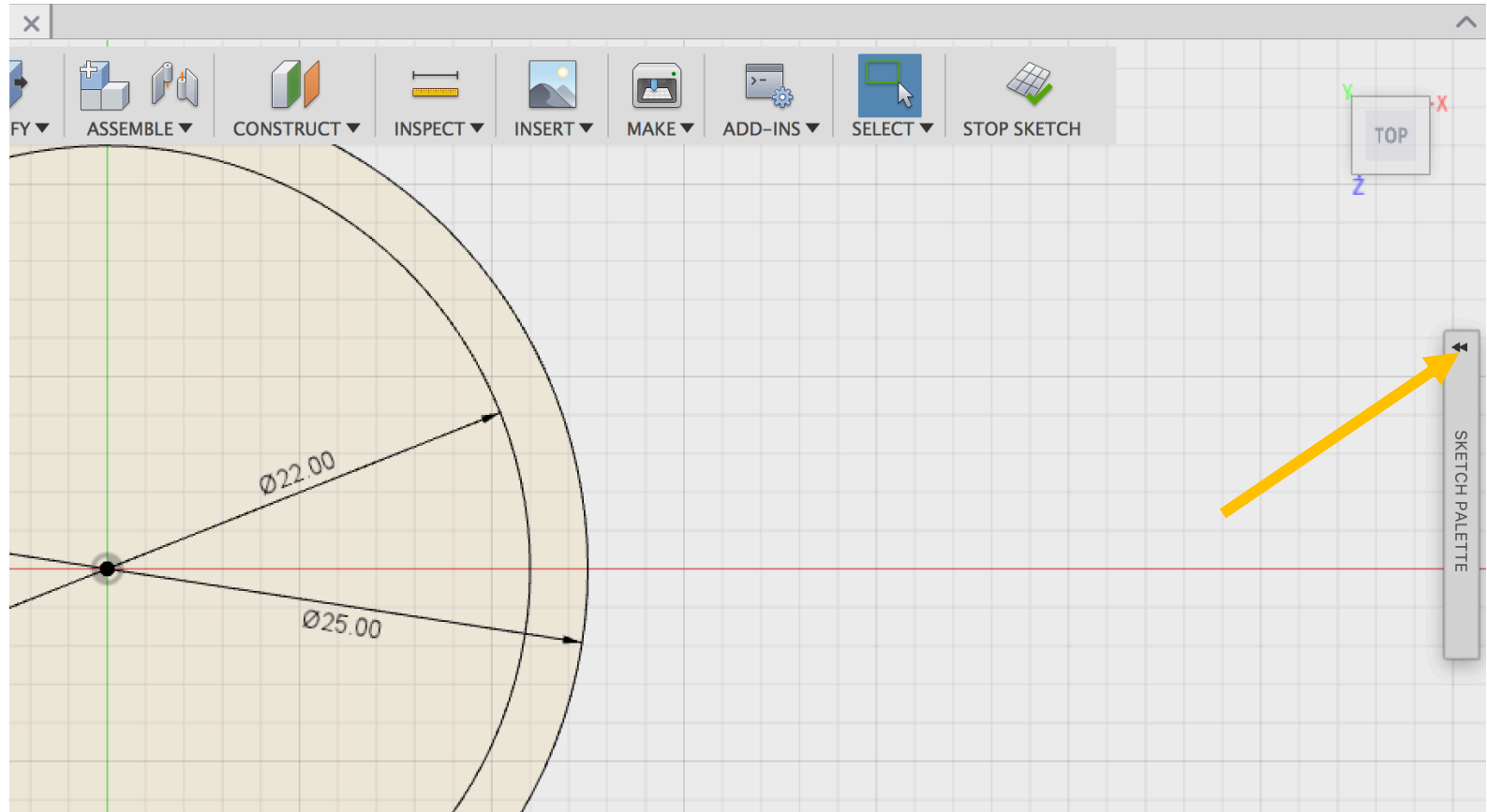


Step 7: Draw a 30mm line to the right starting from the point shown below.



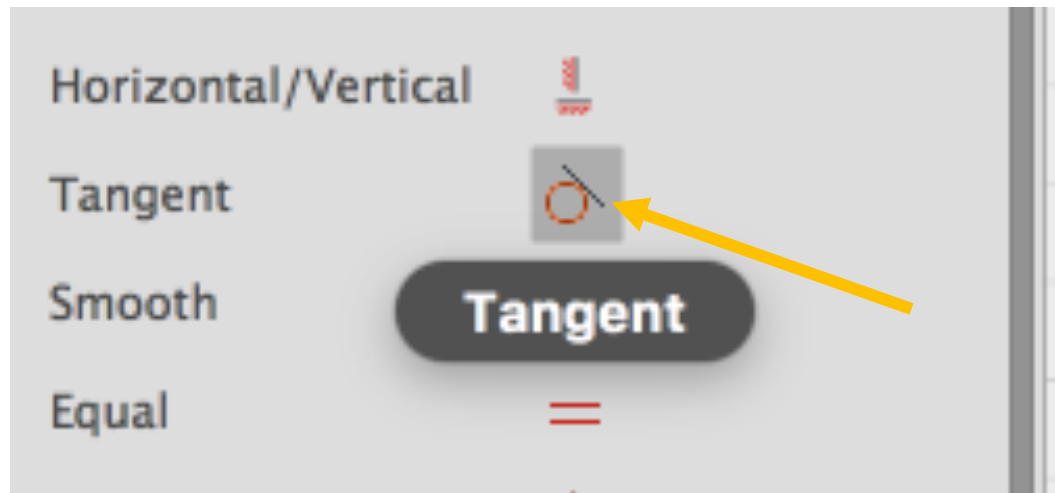


# Step 8: Click on the “Sketch Pallet”.



Note: Step 8-11 are to ensure that the horizontal line always stay on the tangent of the inner circle.

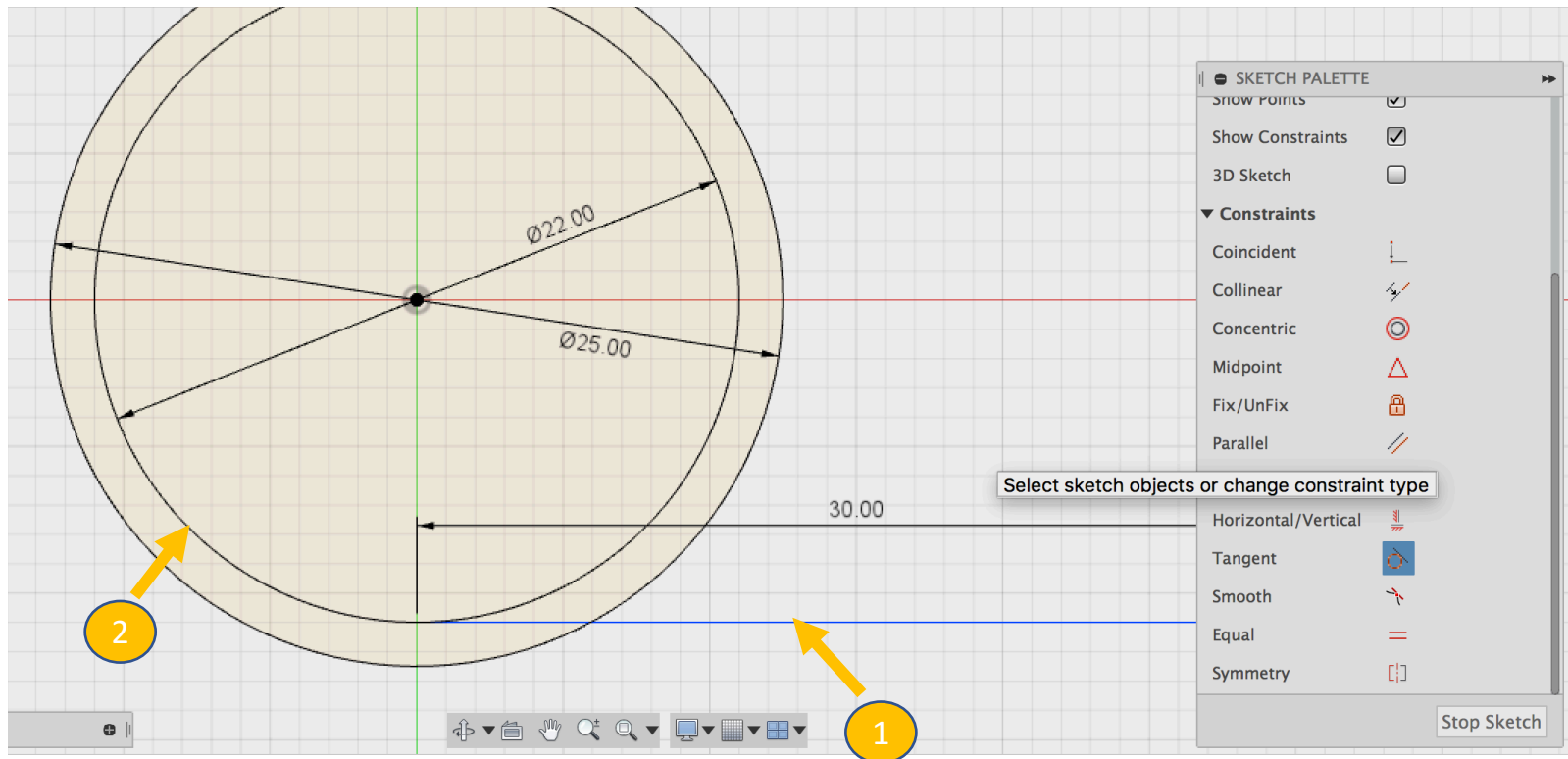
# Step 9: Scroll down and look for “Tangent”. Click on it



Note: Step 8-11 are to ensure that the horizontal line always stay on the tangent of the inner circle.

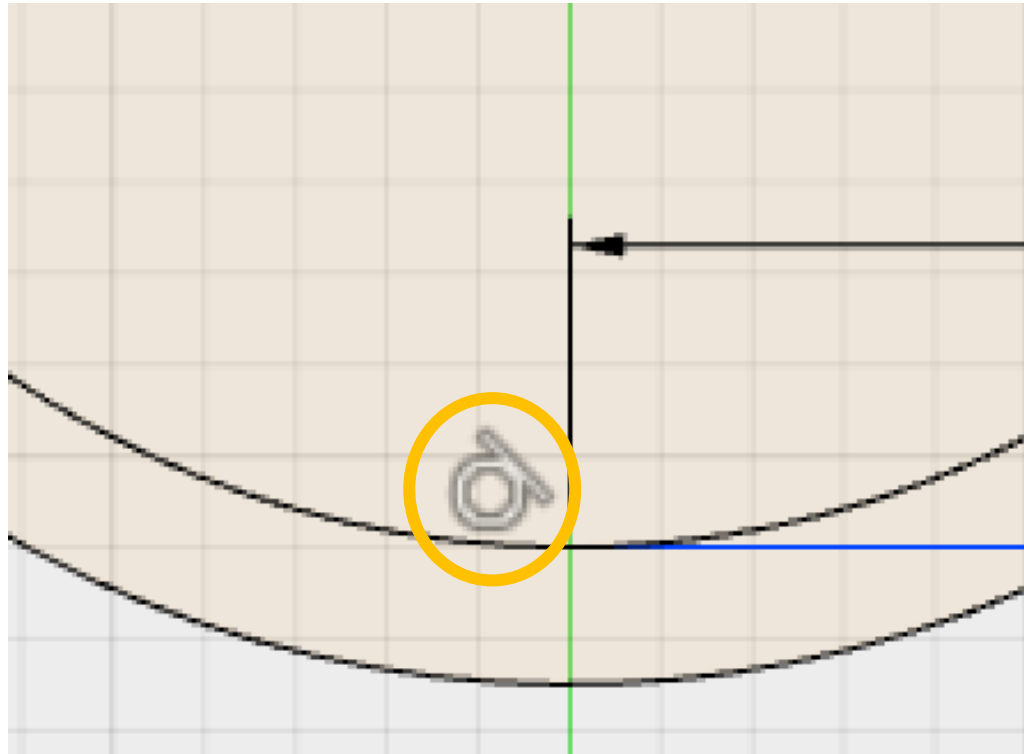


Step 10: Then, click on the horizontal line and the inner circle shown below



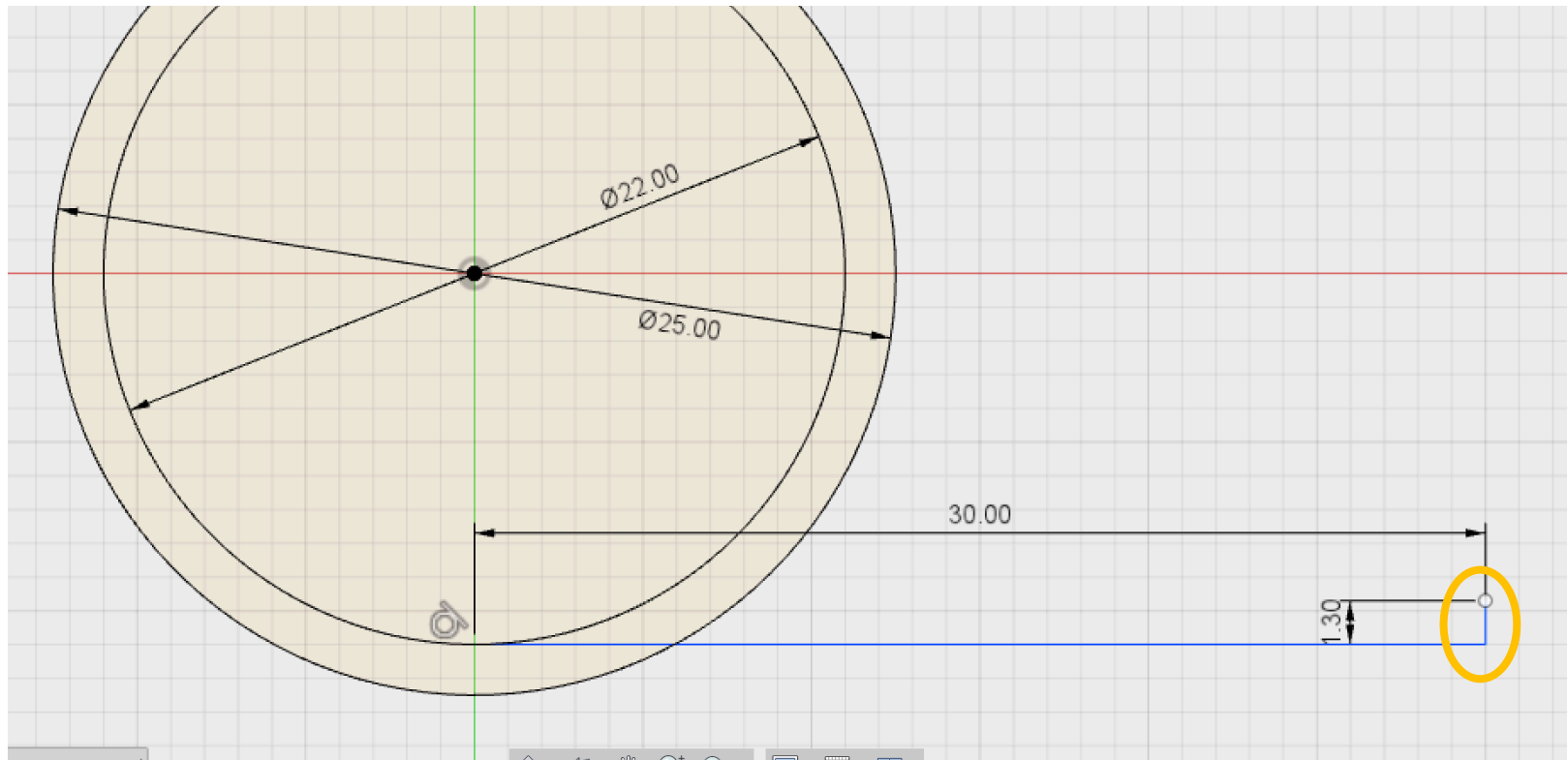
Note: Step 8-11 are to ensure that the horizontal line always stay on the tangent of the inner circle.

Step 11: Check your result, you should get a tangent symbol at this point

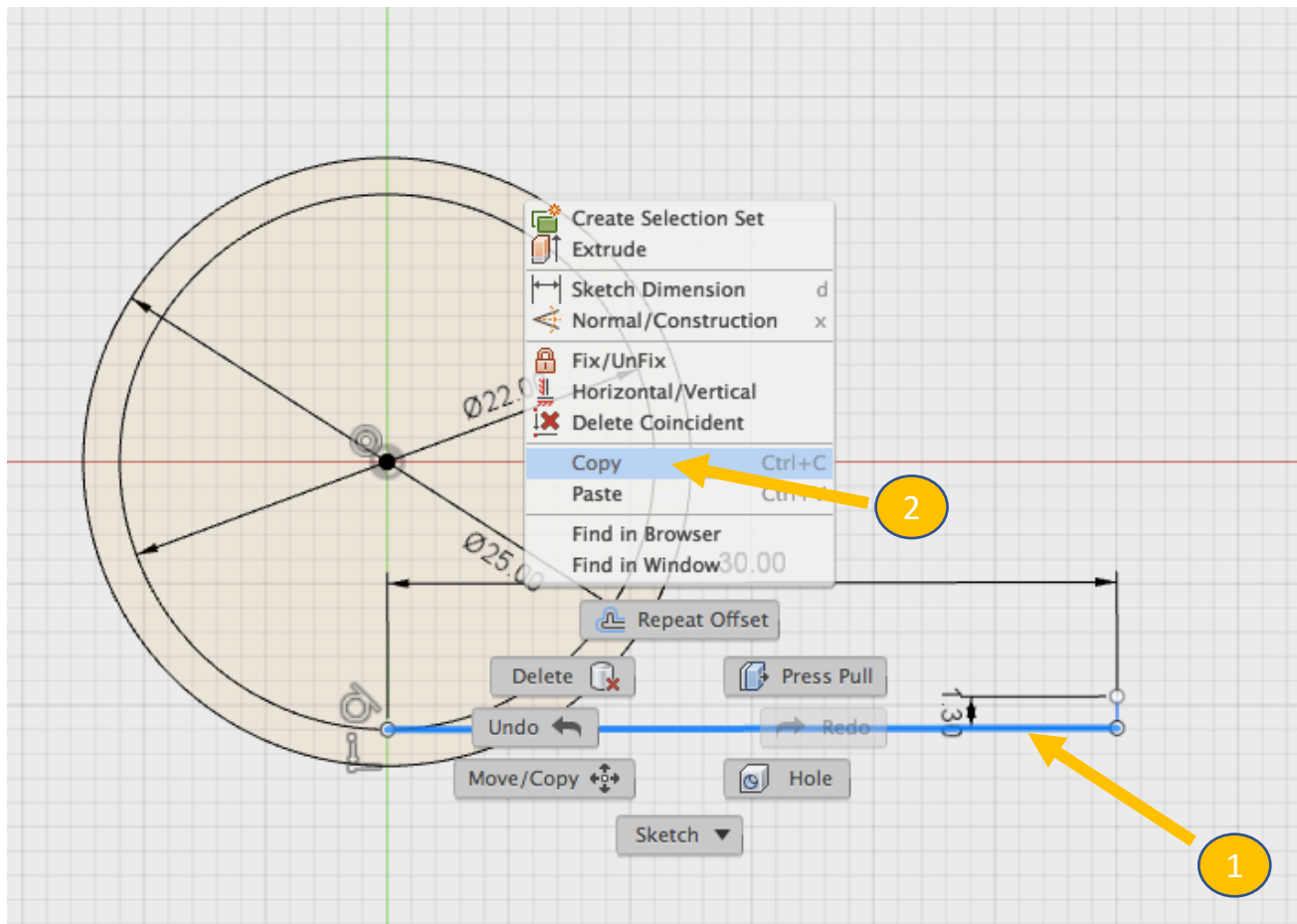


Note: Step 8-11 are to ensure that the horizontal line always stay on the tangent of the inner circle.

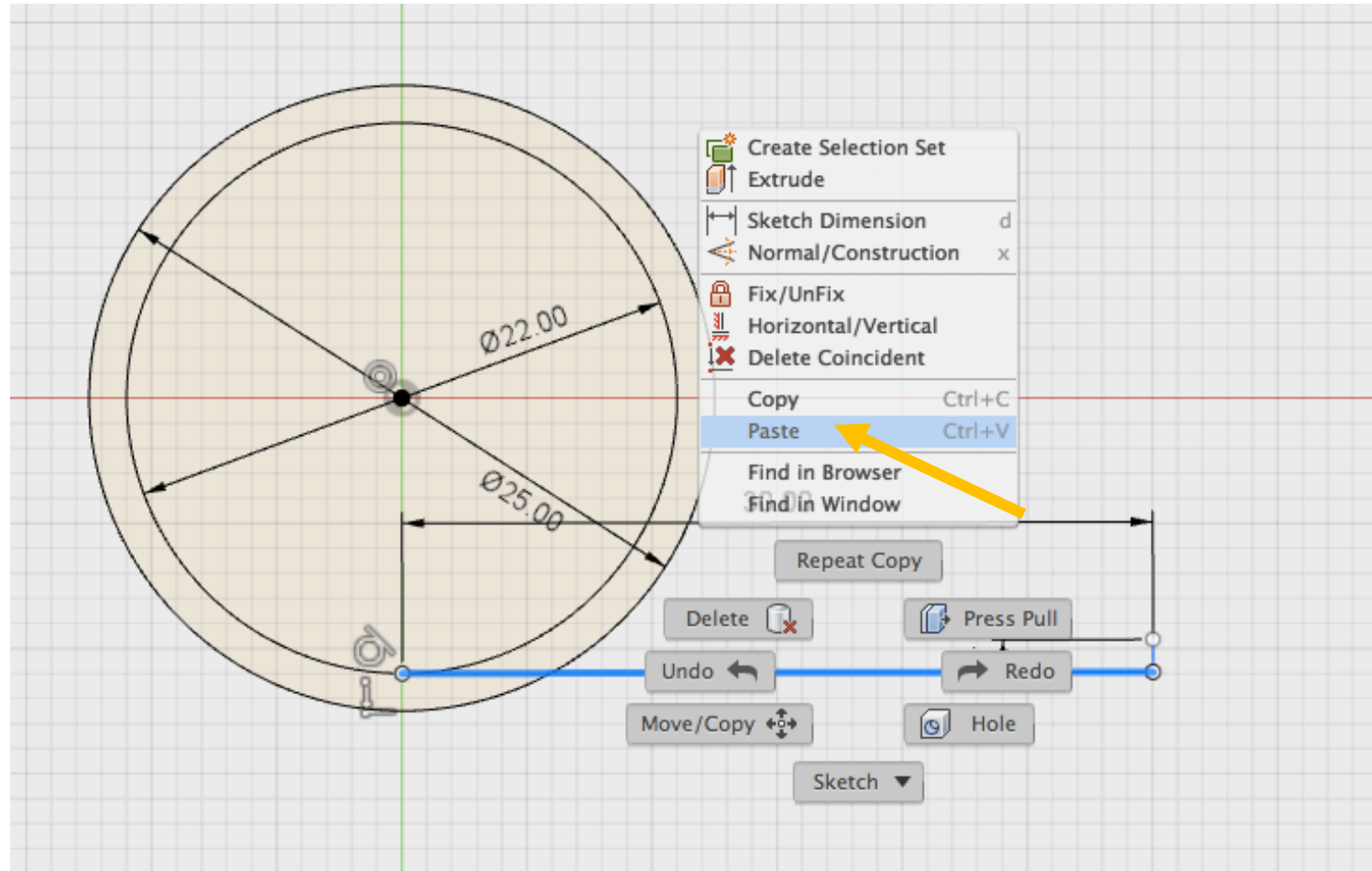
Step 12: Draw a 1.3mm vertical line at the end of the horizontal line.



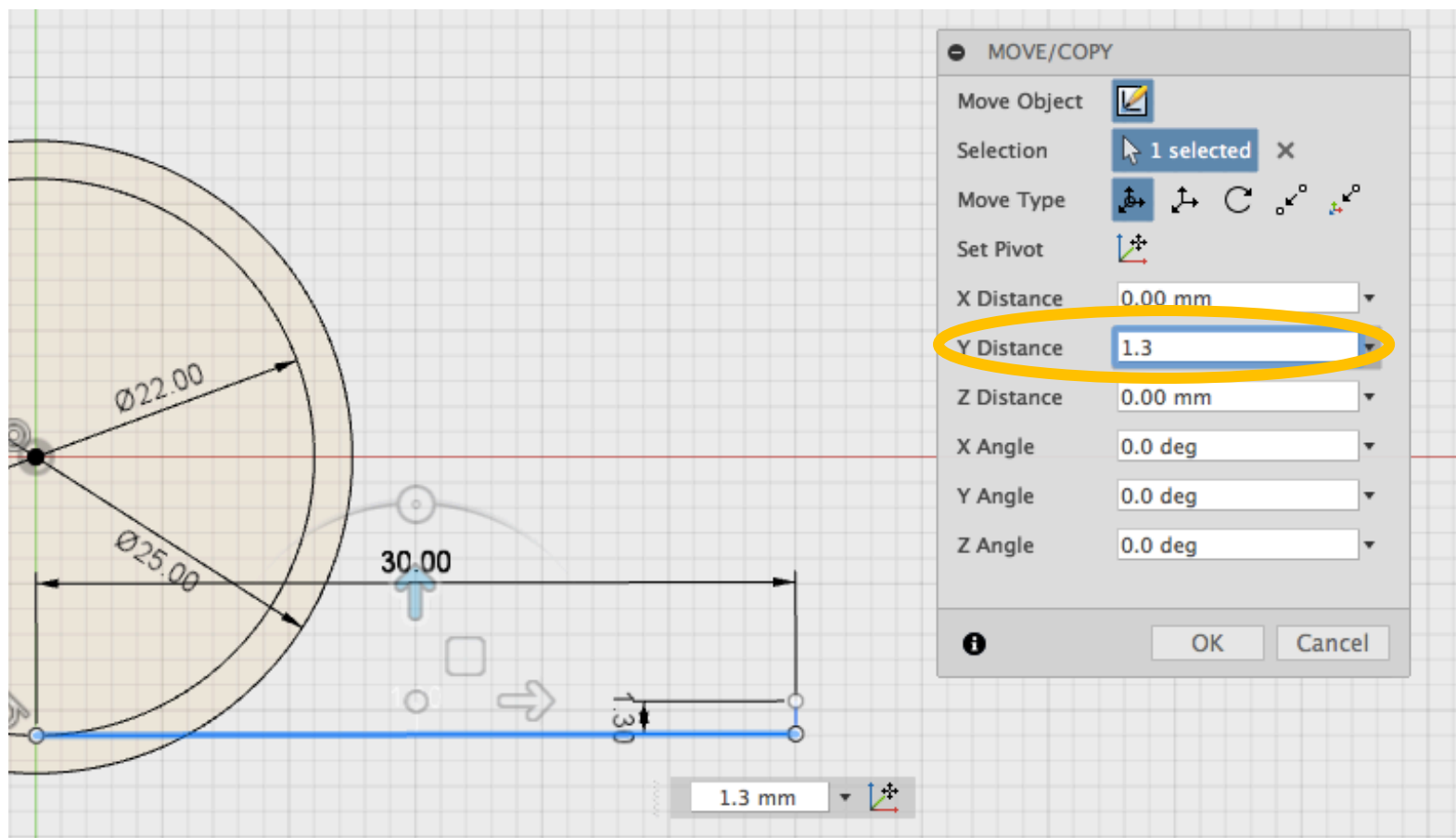
Step 13: Click on the 30mm line, right-click, then click “Copy”.



# Step 14: Right-click again, click “Paste”.

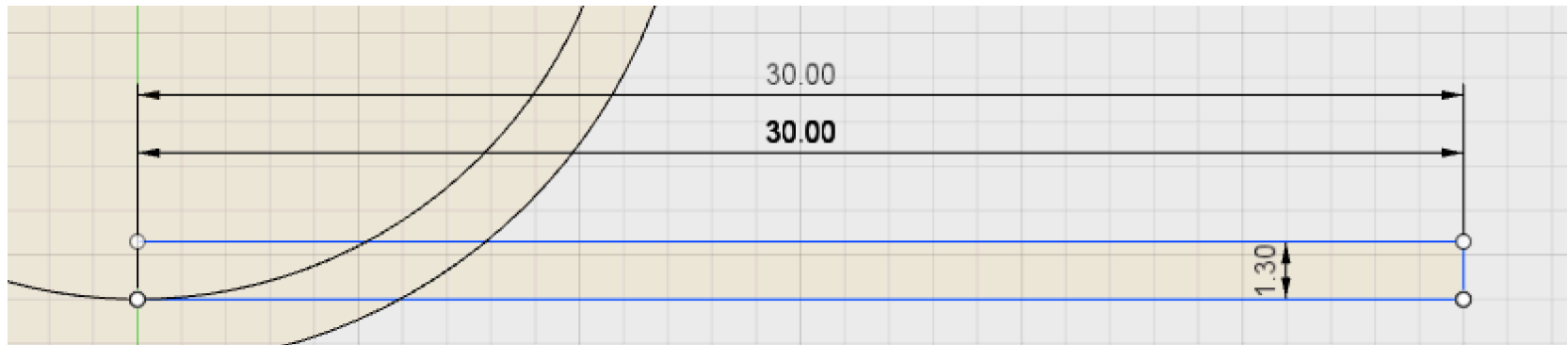


Step 15: Key in “1.3mm” into the  
“Y Distance” then click “OK”.





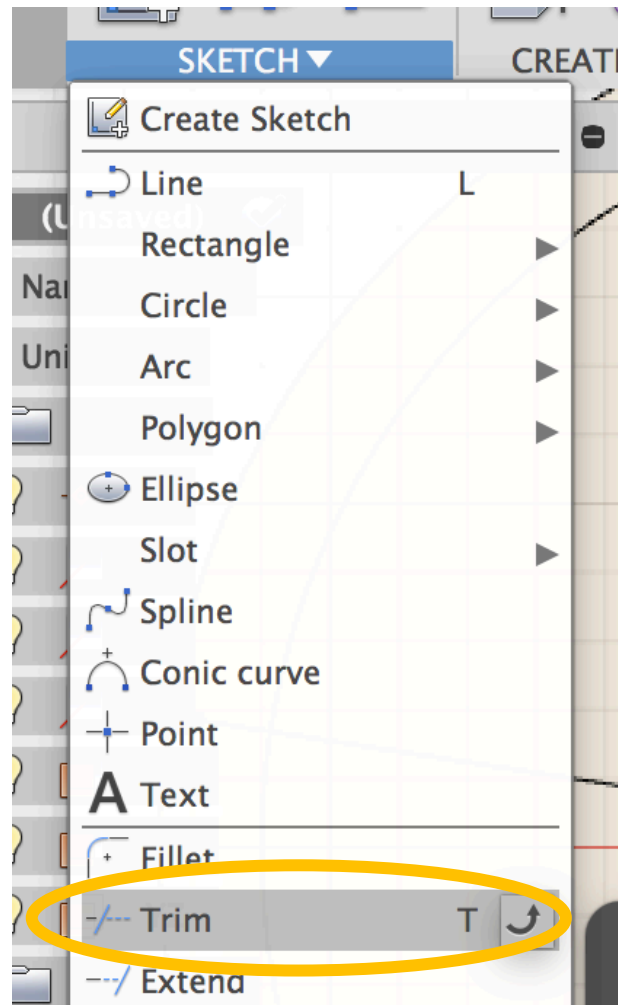
# Step 16: Check your result, it should look like this:



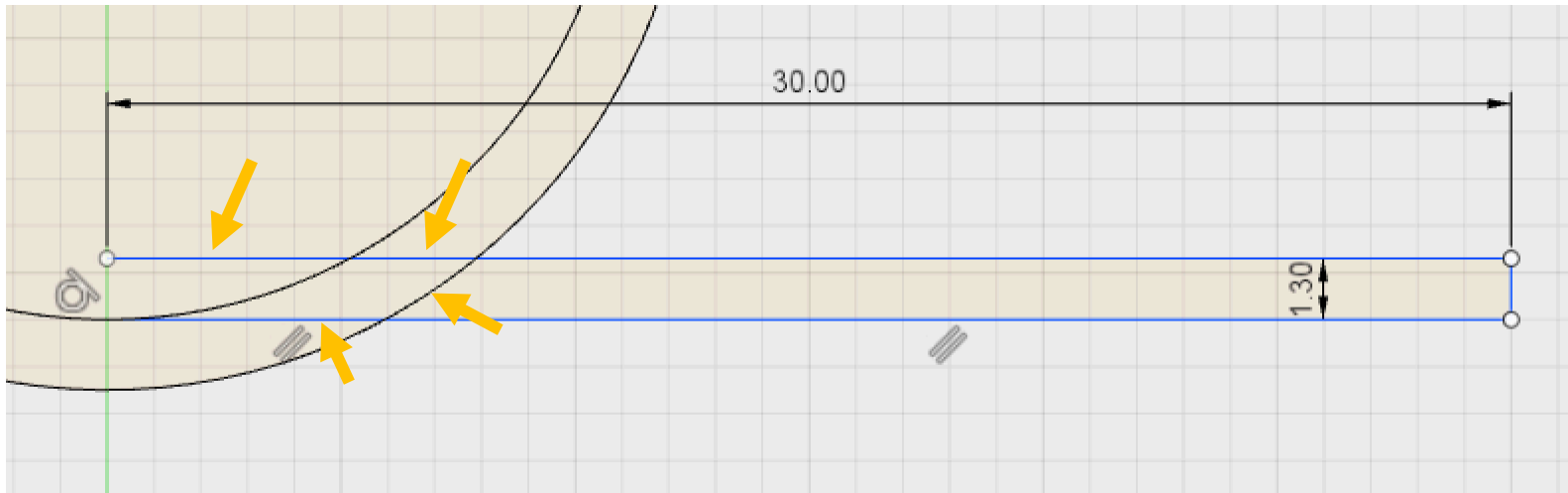
Note: Alternatively, you can draw a 30mm line with the method you learnt before



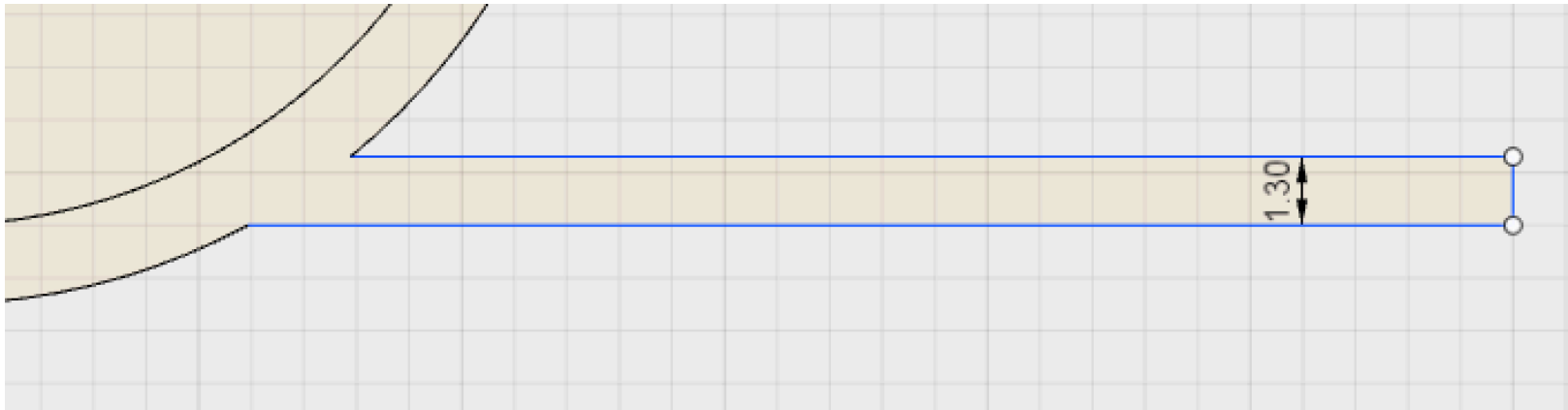
Step 17: Go to “Sketch” > “Trim”.



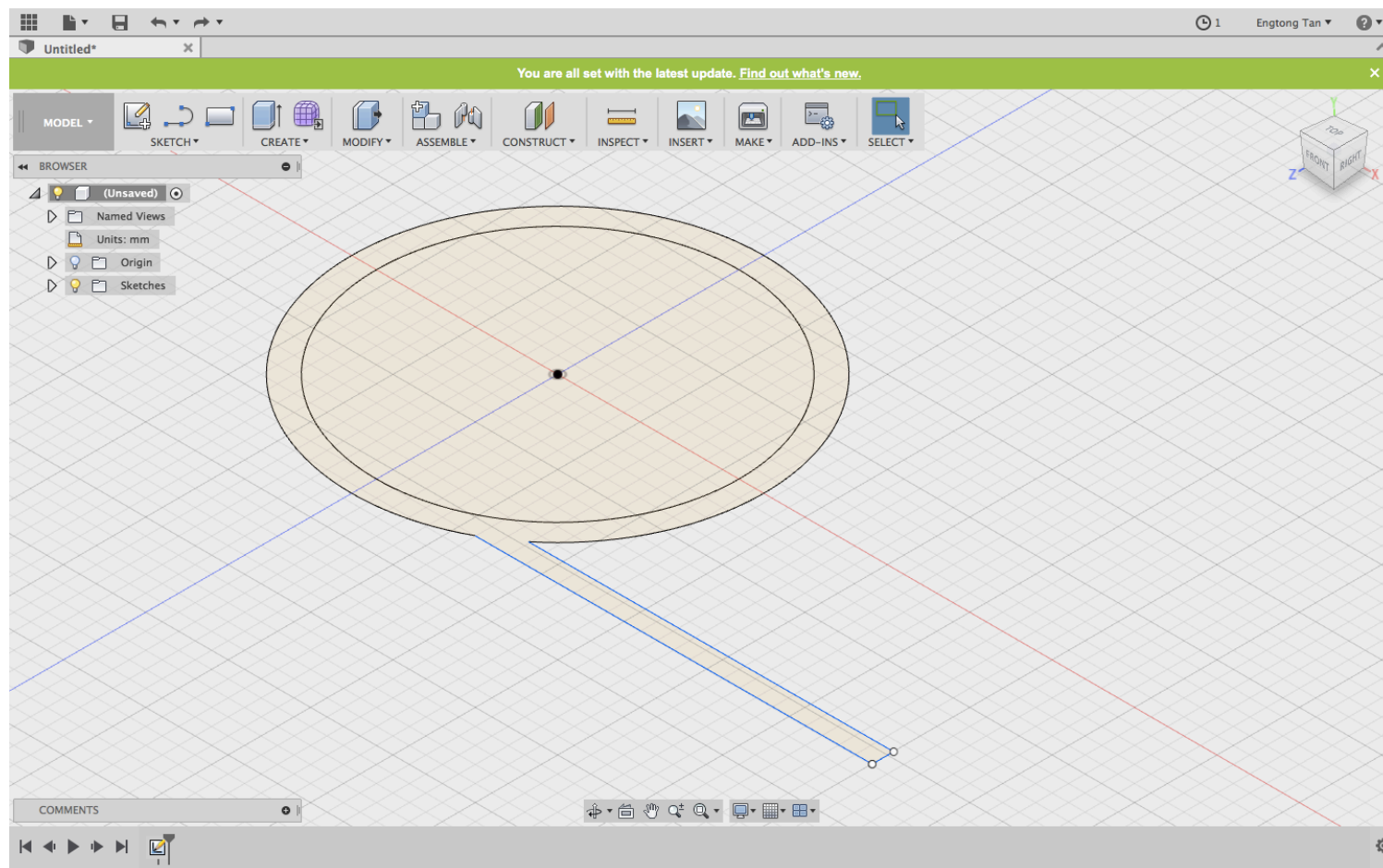
Step 18: Click on each section as shown by the arrow.



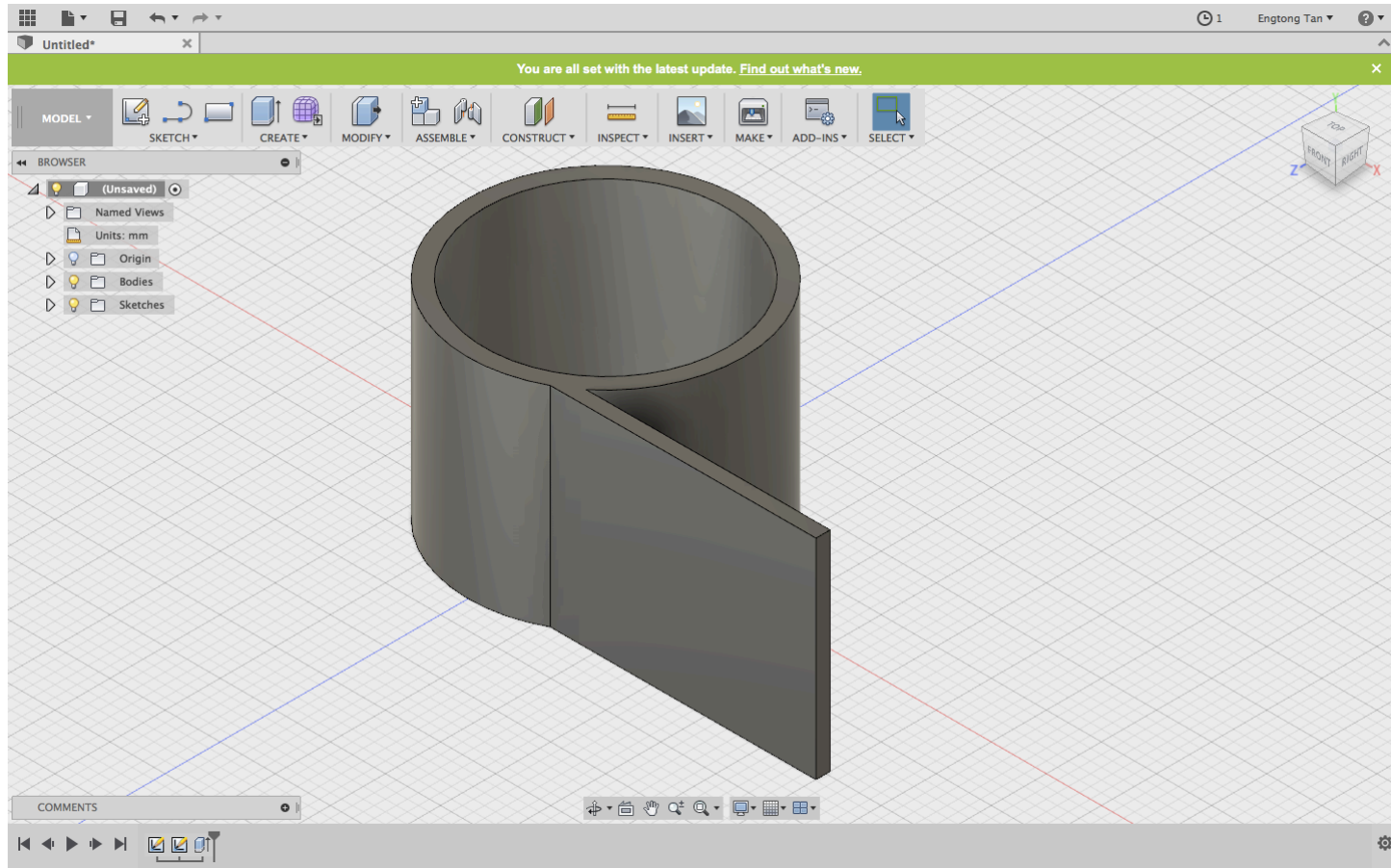
Step 19: Check your result, it should be like this:



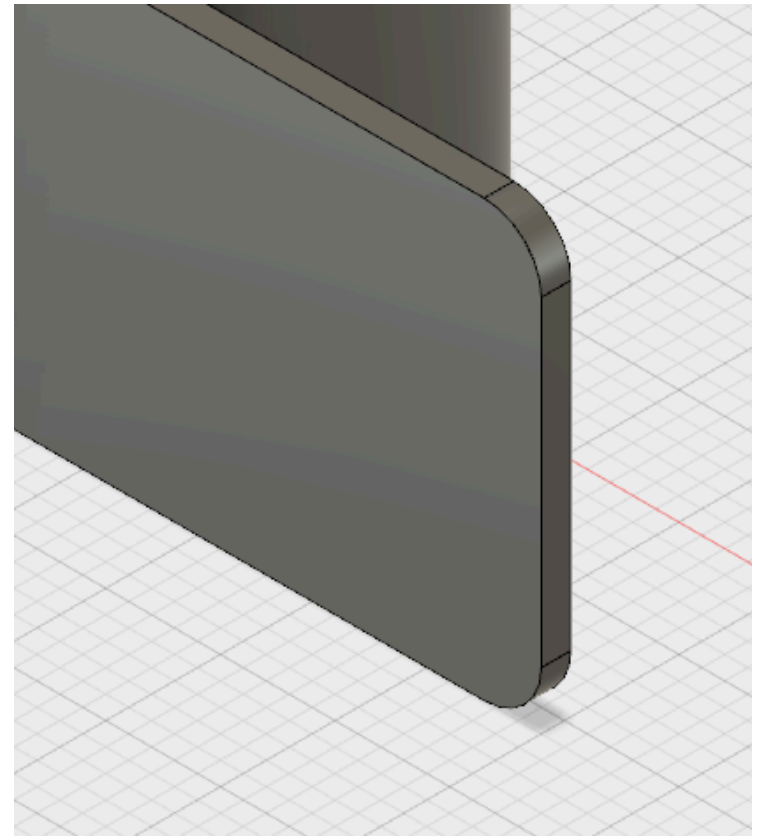
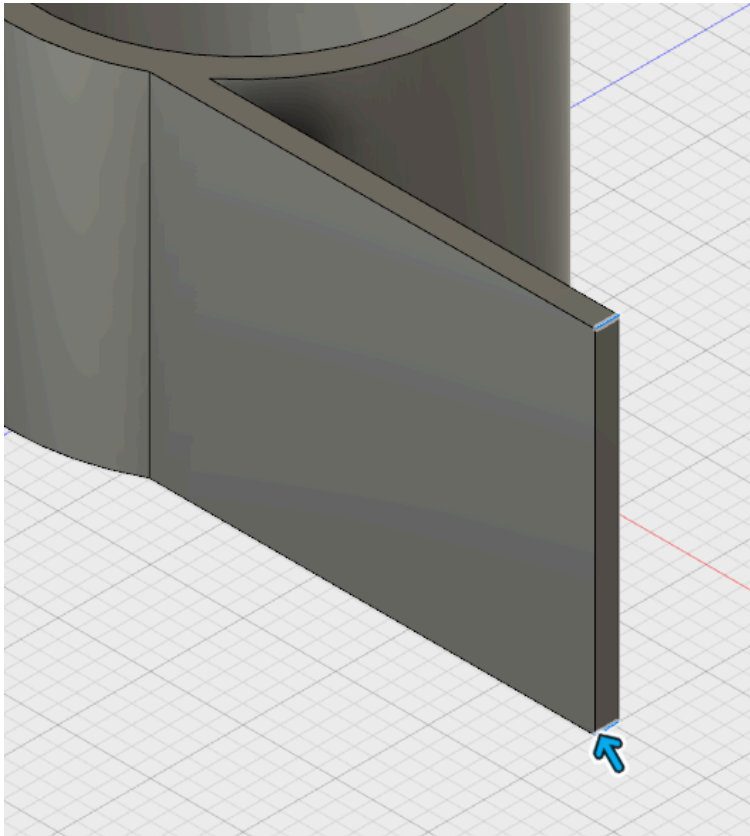
Step 20: Click “Stop Sketch” then change to the isometric view like this:



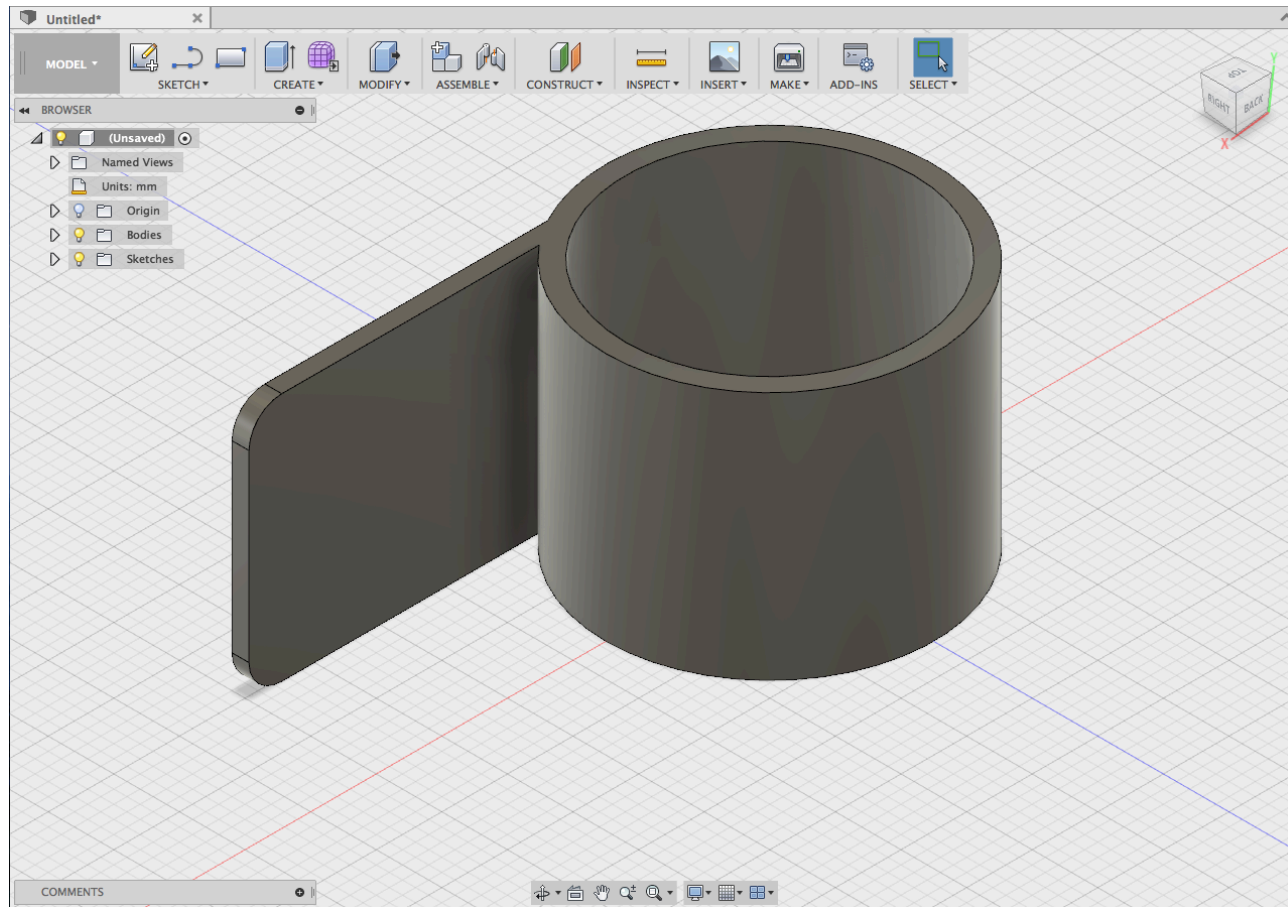
# Step 21: Extrude your sketch by 19mm.



Step 22: Go to “Modify” > “Fillet” to make the sharp edges into rounded edges by 2.5mm radius.

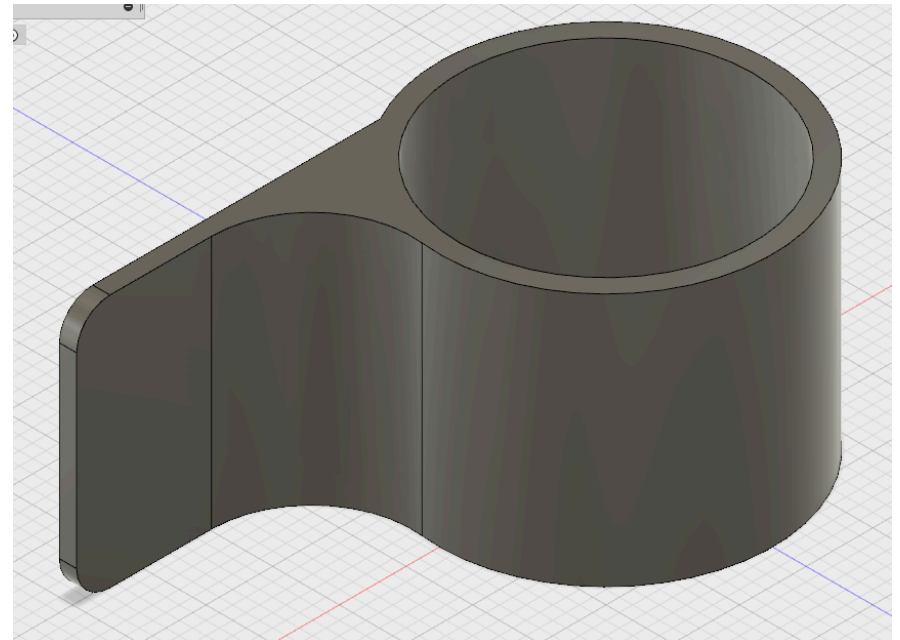
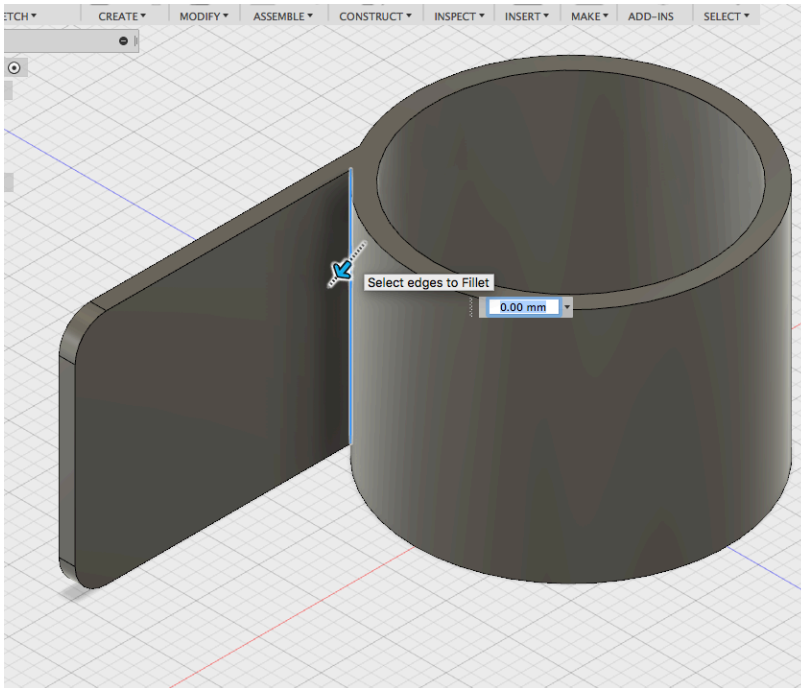


# Step 23: Change your view into this view.

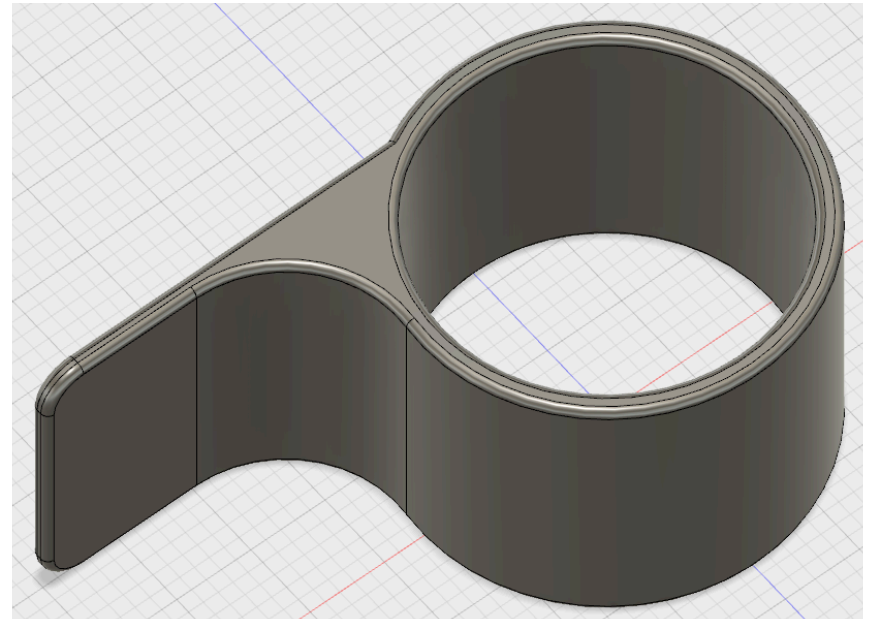
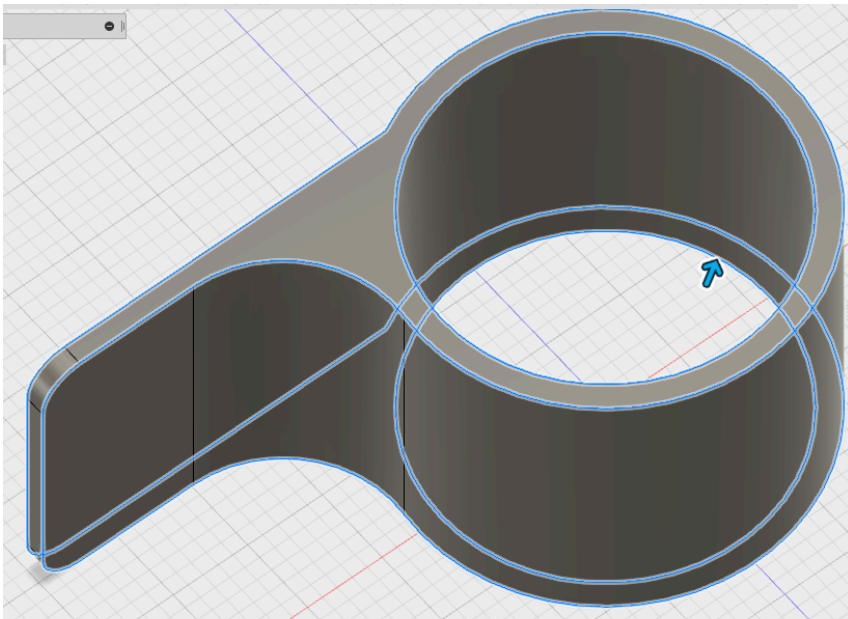




Step 24: Use “Fillet” again, select the inner edge, use 7.5mm radius.

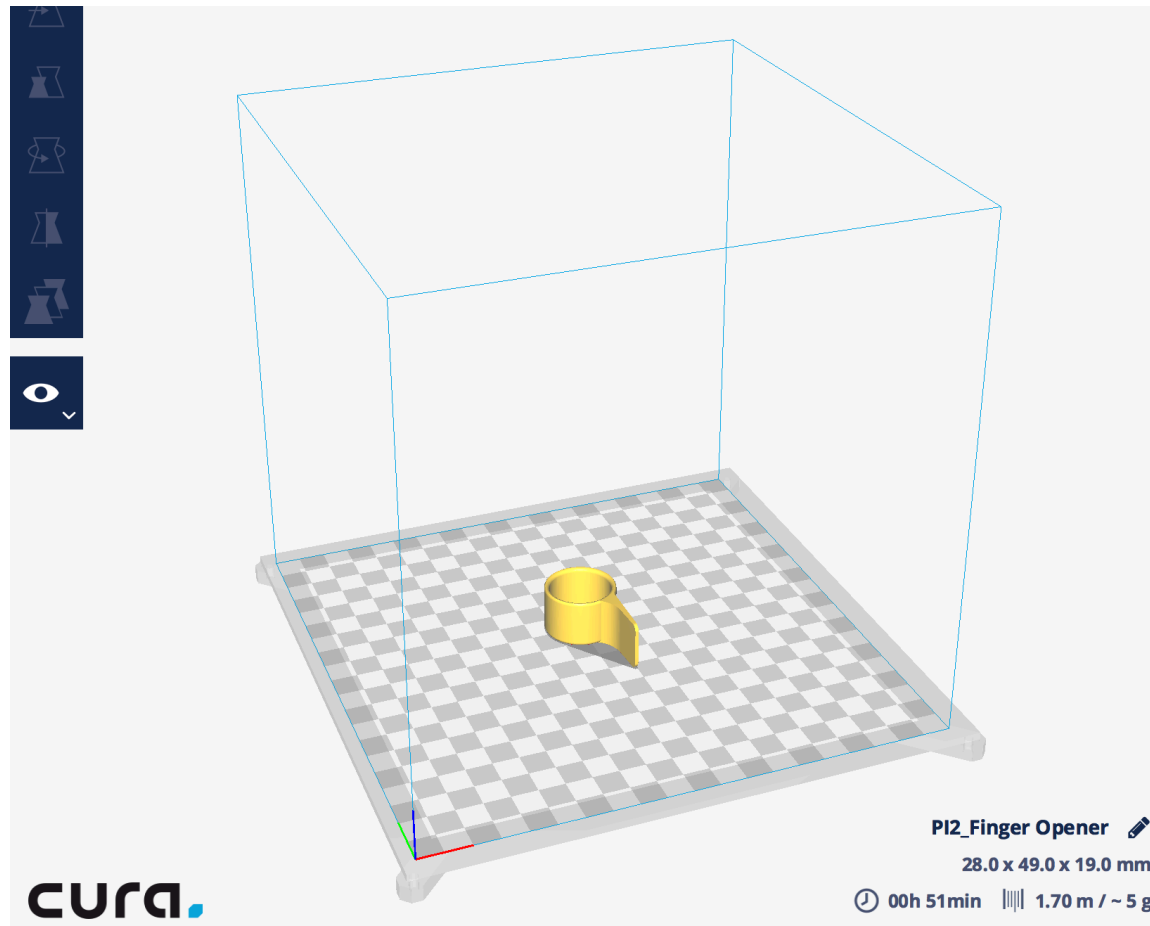


Step 25: Next, use “Fillet” again to make all edges rounded by 0.5mm radius.






Note: You might need change the view in order to select all edges


Step 26: As usual, save it as STL file then send it to Cura to generate the printable file.




# Step 26: Follow these setting

**Prusa i3 #2**   

Material:

PLA 

Profile:

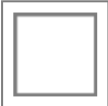


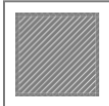
Normal Quality - 0.1mm 

---

**Print Setup**

**Recommended** Custom

Infill

Hollow Light Dense Solid

Enable Support

☐

Build Plate Adhesion

☒

Need help improving your prints? Read the [Ultimaker Troubleshooting Guides](#)

# Challenge: Write your name on the ring opener

